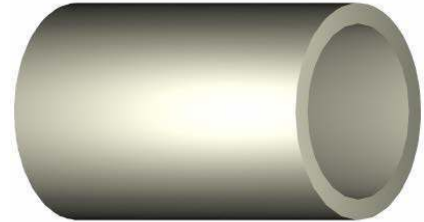


Electr-O-Fuze™ Large Bore Line Pipe, UL 971 and Conforming to API 15LE

Product Description

Electr-O-Fuze™ Single and Co-axial large bore pipe is a proven Semi-Rigid fluorinated HDPE pipe system. It is the only pipe system to fluorinate the interior and exterior of both the primary and secondary pipes, thus providing unparalleled protection. When used in conjunction with Electr-O-Fuze™ EF fuel fittings and a Electr-O-Fuze™ EF welding machine, it provides a UL971 and API 15LE compliant fuel installation.

Electr-O-Fuze™ pipe is available in sizes from 4" to 30" nominal bore available in 20ft sticks. Due to its rugged non corrosive construction and light weight materials it provides a cost competitive extremely quick installation pipeline with a 30 year life span. Ideal for submarine applications.



Applications

- Pipelines
- Refineries
- Marinas
- Harbors
- Fuel Terminals
- Airports
- Moist and marshy areas
- Non-Contaminated and Contaminated sites

Specifications

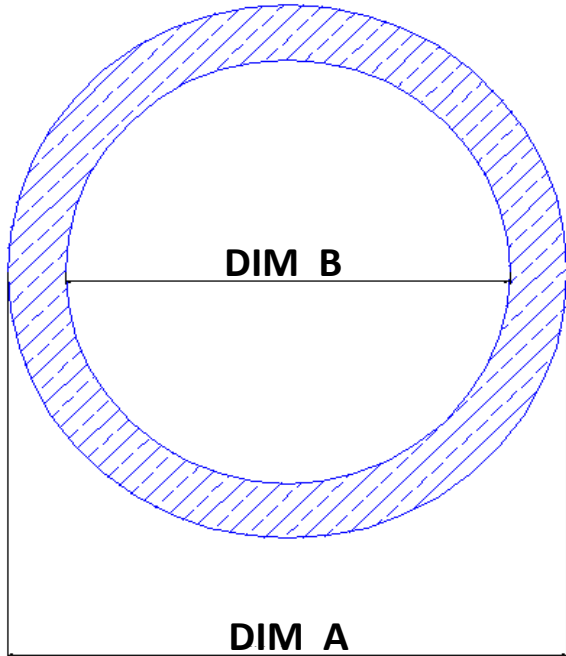
- Pipe Type : Fluorinated UV stable HDPE co-axial (single or Double wall pipe) with a 30 year design life and product warranty. Primary and secondary pipe come integrated, providing true containment. Fire retardancy as per UL 94 level 2 can be offered as an option. Can be used for submarine applications.
- Connections : Electr-O-Fuze™ EF couplers, with spigot elbows, tees, end caps for primary pipe and matching Electr-O-Fuze™ secondary fittings and electro fusion branch saddles
- Transitions : Flange Adaptors, electro fusible spigot end, fluorinated
- Interstitial space : Created with internal standoff legs which are attached to primary pipe if required
- Monitoring : Pressure, passive, or liquid fill
- Operating pressures
 - Primary :
 - Secondary : Up to 350 psi
- Test pressure
 - Primary : **Up to 50 psi with EF test boots & 5 psi with rubber test boots**
 - Secondary : 600 psi
- Approved Fuel Types : **50 psi with EF test boots & 5 psi with rubber test boots**
All Petroleum Products (Motor Vehicle Fuels, High Blend Fuels, Concentrated Fuels, Aviation & Marine Fuels) E85 and Biodiesel
- Operating Temperatures -40°F (-40°C) to 140°F (60°C)

Installation

Installation, use, and maintenance of all Electr-O-Fuze™ products shall be in accordance with the manufacturer's recommendations, State and county approvals. In event of conflicts, the stricter requirement shall govern. (AEP installation manual available directly from AEP, or at info@aep-inc.net).

Certifications/Approvals/Conforms to:

- UL 971 approved Primary File # M47372
- Institute of Petroleum Primary Cert # BC63/1010/98/001 And cert # BC63/0115/2000/001
- Shell International Procurement Certification Cert # BC63/1010/98/002
- API 15LE Specification for Polyethylene Line Pipe
- ISO 4427 Plastic Pipe Systems – PE pipes and fittings



Electr-O-Fuze™ Large Bore Pipe

IPS DR11	DIM A	DIM B	Mass LBS/FT
4	4.50"	3.63"	2.35
5	5.56"	4.49"	3.60
6	6.63"	5.35"	5.00
8	8.63"	6.96"	8.50
10	10.75"	8.68"	13.20
12	12.75"	10.29"	18.55
14	14.00"	11.30"	22.35
16	16.00"	12.92"	29.20
18	18.00"	14.53"	37.00
BEND RADIUS ALL SIZES 25 TIMES DIM B			

Metric SDR 11	DIM A	DIM B	Mass KG/M
110	110 mm	89 mm	3.25
125	125 mm	101 mm	4.20
160	160 mm	130 mm	6.75
180	180 mm	146 mm	8.51
200	200 mm	162 mm	10.50
225	225 mm	183 mm	13.30
250	250 mm	203 mm	16.40
280	280 mm	227 mm	22.60
315	315 mm	256 mm	26.10
355	355 mm	288 mm	33.10
400	400 mm	325 mm	42.00
450	450 mm	366 mm	53.00
BEND RADIUS ALL SIZES 25 TIMES DIM B			

Name	GB	Title	Electr-O-Fuze™ Large Bore Single Wall Pipe	
Material	HDPE	A1		
Part/Ref	LBEF			
Projection	Scale	ADVANTAGE EARTH PRODUCTS, INC	Date	Drawing No.
			01/13	EF1003

Note : specifications subject to change without notice 09/17