

Electr-O-Fuze™ EF Spigot Saddle (Tapping Saddles)

Product Description

Electr-O-Fuze™ electrofusion saddles are safe and reliable proven electrofusion technology using open wire principles. Electr-O-Fuze™ electrofusion saddles are the only fittings used in petroleum industry to also be tested and approved for use with natural gas and low pressure gas, thus providing unparalleled quality and protection. When used in conjunction with Electr-O-Fuze™ pipe and an Electr-O-Fuze™ electrofusion welder, it provides a Florida DEP compliant fuel installation with a 30 year life span.

Compact Part in HDPE, saddle with exposed heating element for optimal heat transfer and outlet spigot for use with Electr-O-Fuze™ couplers. Swarfless tapping in the depressurized state allows tapping into existing fuel lines providing a permanent branch according to ISO requirements for electrofusion fittings.

Applications

- | | |
|------------------------|---|
| ○ Service Stations | ○ Refineries |
| ○ Marinas | ○ Harbors |
| ○ Fuel Terminals | ○ Airports |
| ○ Moist & Marshy Areas | ○ Non-Contaminated & Contaminated Sites |

Specifications

- | | |
|--------------------------|---|
| ○ Fitting Type: | Matched electrofusion fittings are utilized throughout the pipeline system in order to join the various pieces. Deep sockets and ‘safe’ low voltage operation (42V), applied through dedicated ancillary equipment ensures maximum joint integrity. Fusion indicators monitor the joint melt pressure, while absolute security of the weld is ensured using the fittings bar code feature in conjunction with the fully automatic Electr-O-Fuze™ EF Control Box Unit. Swarfless tapping in the depressurized state by means of commercial drilling units. |
| ○ Electrofusion Machine: | Electr-O-Fuze™ EF welding machine with memory, bar code reader, printing and error reporting. |
| ○ Temperature Range: | Fittings can be worked with at ambient temperatures between –24°F and 160°F. |
| ○ Pipe Fusion Range: | The fittings can be fused to pipe of SDR stages 17.6 to 7.4 in accordance with DIN 8074 (E), ISO 4437, pr EN 1555 and DIN EN 12201 (E). |
| ○ Operating Pressures: | 150 psi maximum. |
| ○ Test Pressure: | Primary >60psi < 150psi |
| ○ Approved Fuel Types: | All Petroleum Products (<i>Motor Vehicle Fuels, High Blend Fuels, Concentrated Fuels, Aviation & Marine Fuels</i>) E85 and Biodiesel. |

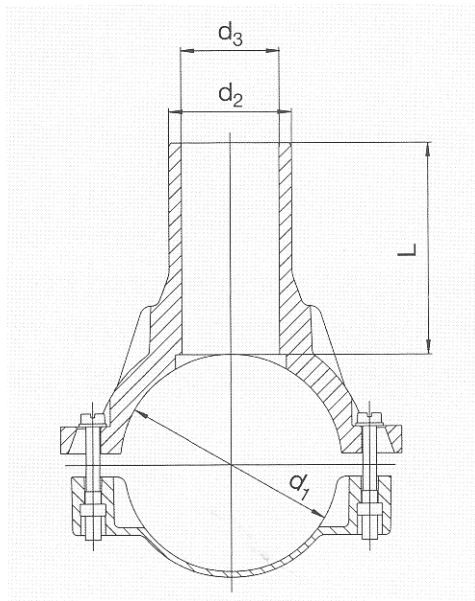
Installation

Installation, use, and maintenance of all Electr-O-Fuze™ products shall be in accordance with the manufacturer’s recommendations, State and county approvals. In event of conflicts, the stricter requirement shall govern. AEP installation manual available directly from AEP, or at georges@AEP-inc.net. All operators to be AEP certified on both the fittings and electrofusion machine.

Certifications/Approvals

- | | |
|--------------------------------|---|
| ○ Institute of Petroleum | Cert # BC63/1010/98/001 And cert # BC63/0115/2000/001 |
| ○ Shell Int. Procurement Cert. | Cert # BC63/1010/98/002 |
| ○ State of Florida | EQ 683 and EQ 617 – and Derm Approval |
| ○ State of Michigan | MUSTR – Rule 9, subsections 280.20 (b) |
| ○ New York City Fire Dept. | CoA 5117 |





Diam. NB* inches	Diam. OD** metric	Part #	Dim d_1		Dim d_2		Dim d_3		Dim L		Weight kg/ea	Weight lbs/ea
			mm	in.	mm	in.	mm	in.	mm	in.		
2''/1½''	63/50	612759	63	2''	50	1½''			78	3.07''	0.321	0.71
3''/2''	90/63	612819	90	3''	63	2''			103	4.06''	0.715	1.57
4''/2''	110/63	612760	110	4''	63	2''			109	4.29''	0.945	2.08
5''/2''	125/63	612761	125	5''	63	2''			109	4.29''	1.050	2.31
6''/2''	160/63	612762	160	6''	63	2''			109	4.29''	1.245	2.74
Other sizes available to 1600mm (63'')												

(*) Nominal Bore₂

(**) Outside Diameter