

Electr-O-Fuze™ 90° Coaxial Elbow, UL971 Listed

Product Description

Electr-O-Fuze™ Coaxial 90° Elbow assemblies are safe and reliable proven electrofusion fittings. The Assembly comprises of various electrofusion reducers with an encapsulated primary 90° elbow inside a butt welded pipe sleeve. The aim of the fitting is to create a continuous secondary containment when changing direction. When used in conjunction with Electr-O-Fuze™ pipe and an Electr-O-Fuze™ EF welding machine, it provides a UL971 compliant fuel installation with a 30 year life span.

The primary elbow is covered using the over sleeve pipe, which is sealed to the secondary pipe using electrofusion reducers. These reducers when welded form part of the secondary pipe resulting in a permanent leak tight seal over sleeve for the primary coupler, providing a continuous interstitial space over the joint. These fittings can be used in direct bury applications or in a sump as the welds form part of the pipe.



Applications

- | | |
|------------------------|---|
| ○ Service Stations | ○ Refineries |
| ○ Marinas | ○ Harbors |
| ○ Fuel Terminals | ○ Airports |
| ○ Moist & Marshy Areas | ○ Non-Contaminated & Contaminated sites |

Specifications

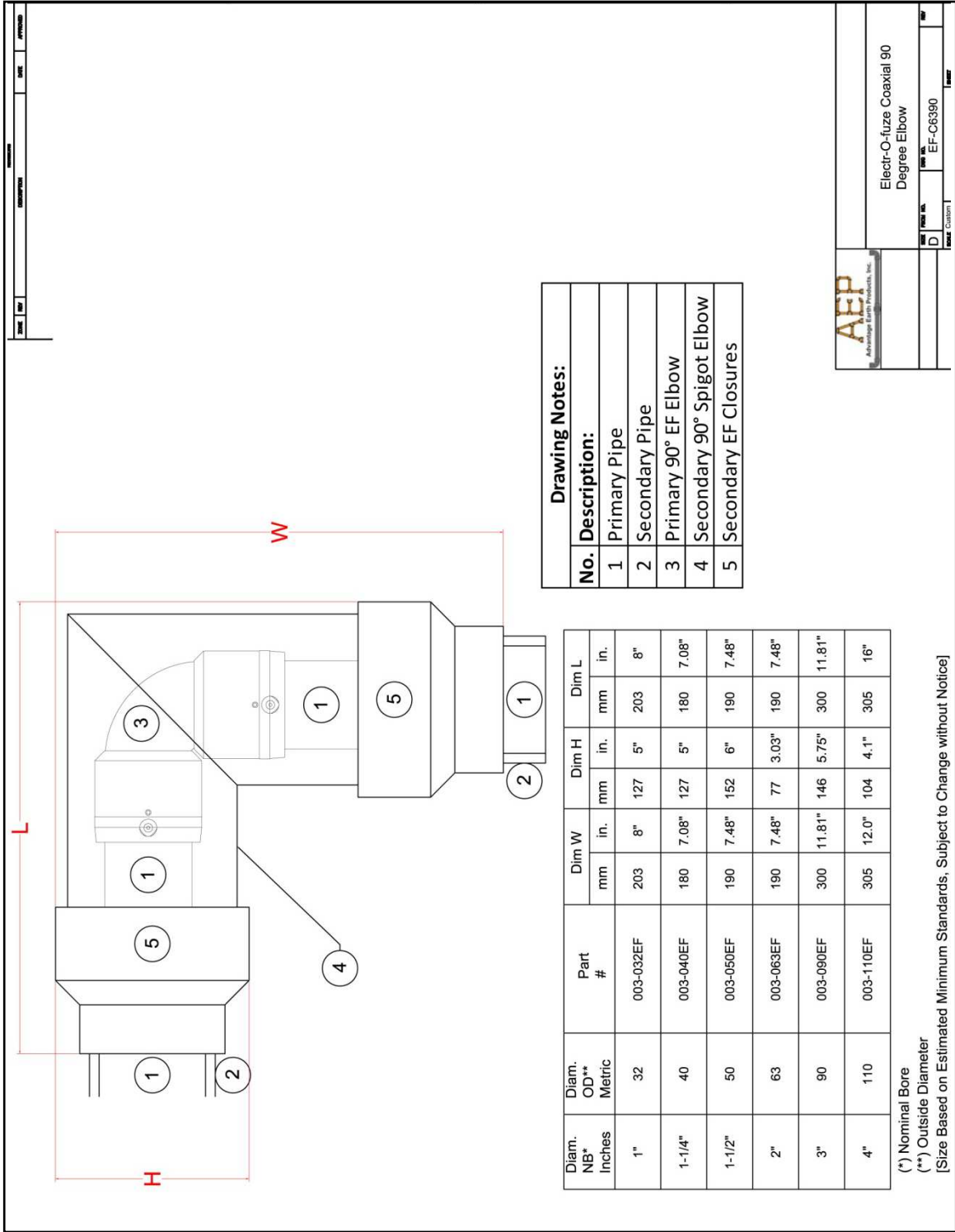
- | | |
|--------------------------|--|
| ○ Fitting Type: | Matched electrofusion fittings are utilized throughout the pipeline system in order to join the various pieces. Deep sockets and ‘safe’ low voltage operation (42V), applied through dedicated ancillary equipment ensures maximum joint integrity. Fusion indicators monitor the joint melt pressure, while absolute security of the weld is ensured using the fittings bar code. |
| ○ Electrofusion Machine: | Electr-O-Fuze™ EF welding machine with memory, bar code reader, printing and error reporting. |
| ○ Temperature Range: | Fittings can be worked with at ambient temperatures between –24°F and 160°F. |
| ○ Pipe Fusion Range: | The fittings can be fused to pipe of SDR stages 17.6 to 7.4 in accordance with DIN 8074 (E), ISO 4437, pr EN 1555 and DIN EN 12201 (E). |
| ○ Operating Pressures: | 150psi primary, 50psi secondary with EF test boots & 5psi with rubber test boots. |
| ○ Test Pressure: | Primary >60psi <150psi; Secondary 50psi with EF test boots & 5psi with rubber test boots. |
| ○ Approved Fuel Types: | All Petroleum Products (<i>Motor Vehicle Fuels, High Blend Fuels, Concentrated Fuels, Aviation & Marine Fuels</i>) E85 and Biodiesel. |

Installation

Installation, use, and maintenance of all Electr-O-Fuze™ products shall be in accordance with the manufacturer’s recommendations, State and County approvals. In the event of conflicts, the stricter requirement shall govern. AEP installation manual available directly from AEP, or at info@AEP-inc.net. All operators to be AEP certified on both the fittings and electrofusion machine.

Certifications/Approvals

- | | |
|--------------------------------|---|
| ○ UL 971 Approved | File # MH47372 |
| ○ Institute of Petroleum | Cert # BC63/1010/98/001 And cert # BC63/0115/2000/001 |
| ○ Shell Int. Procurement Cert. | Cert # BC63/1010/98/002 |
| ○ State of Florida | EQ 683 and EQ 617 – and Derm Approval |
| ○ State of Michigan | MUSTR – Rule 9, subsections 280.20 (b) |
| ○ New York City Fire Dept. | CoA 5117 |
| ○ Factory Permit | DIN EN 10 204-3.1 |
| ○ State of California | CARB, State Fire Marshall Cert # GVRC 005:060:001 |



Drawing Notes:

No.	Description:
1	Primary Pipe
2	Secondary Pipe
3	Primary 90° EF Elbow
4	Secondary 90° Spigot Elbow
5	Secondary EF Closures

Diam. NB* Inches	Diam. OD** Metric	Part #	Dim W		Dim H		Dim L	
			mm	in.	mm	in.	mm	in.
1"	32	003-032EF	203	8"	127	5"	203	8"
1-1/4"	40	003-040EF	180	7.08"	127	5"	180	7.08"
1-1/2"	50	003-050EF	190	7.48"	152	6"	190	7.48"
2"	63	003-063EF	190	7.48"	77	3.03"	190	7.48"
3"	90	003-090EF	300	11.81"	146	5.75"	300	11.81"
4"	110	003-110EF	305	12.0"	104	4.1"	305	16"

(*) Nominal Bore
 (**) Outside Diameter
 [Size Based on Estimated Minimum Standards, Subject to Change without Notice]

AEP
 Advanced Earth Products, Inc.

Electr-O-fuze Coaxial 90 Degree Elbow
 Part No. EF-C6390
 Rev. 01/15