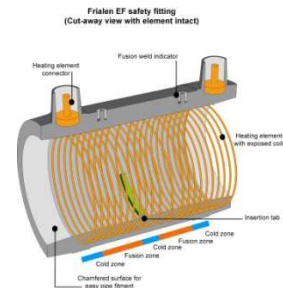


Electr-O-Fuze™ Secondary EF Closures, UL971 Listed

Product Description

Electr-O-Fuze™ Secondary EF closures are safe, reliable and a proven electro fusion technology using closed wire principles. When used in conjunction with Electr-O-Fuze™ pipe and a Electr-O-Fuze™ EF welding machine, it provides a UL971 compliant fuel installation with a 30 year life span. Closures are supplied with or without test ports.

Electr-O-Fuze™ Secondary Electro Fusion Closures are available in sizes from 1¼" to 6" nominal bore. These low pressure closures replace the commonly used test boots, and provide a permanent closure for the interstitial space, capable of withstanding both vacuum and pressure monitoring systems.



Applications

- Service stations
- Marina's
- Airports
- Non-Contaminated and Contaminated sites

Specifications

- Fitting Type : Matched electrofusion fittings are utilized throughout the pipeline system in order to close Interstitial spaces between the primary and secondary pipe. Closures with test ports are supplied with an 1/8" female test port. Short Pattern Secondary Closures and 'safe' low voltage operation (42V), applied through dedicated ancillary equipment ensures maximum joint integrity. Fusion indicators monitor the joint melt pressure, while absolute security of the weld is ensured using the fittings bar code feature in conjunction with the fully automatic Electr-O-Fuze™ EF welding machine.
- Electrofusion Machine: Electr-O-Fuze™ EF welding machine with memory, bar code reader, printing and error reporting
- Temperature range : Fittings can be worked with at ambient temperatures between -24°F and 160°F.
- Pipe fusion range : The fittings can be fused to pipe of SDR stages 17.6 to 7.4 in accordance with DIN 8074 (E), ISO 4437, pr EN 1555 and DIN EN 12201 (E).
- Operating pressures : 50 psi maximum
- Test pressure : 50 psi max (EF), 5psi max (rubber test boot).
- Approved Fuel Types : All Petroleum Products (Motor Vehicle Fuels, High Blend Fuels, Concentrated Fuels, Aviation & Marine Fuels) E85 and Biodiesel

Installation

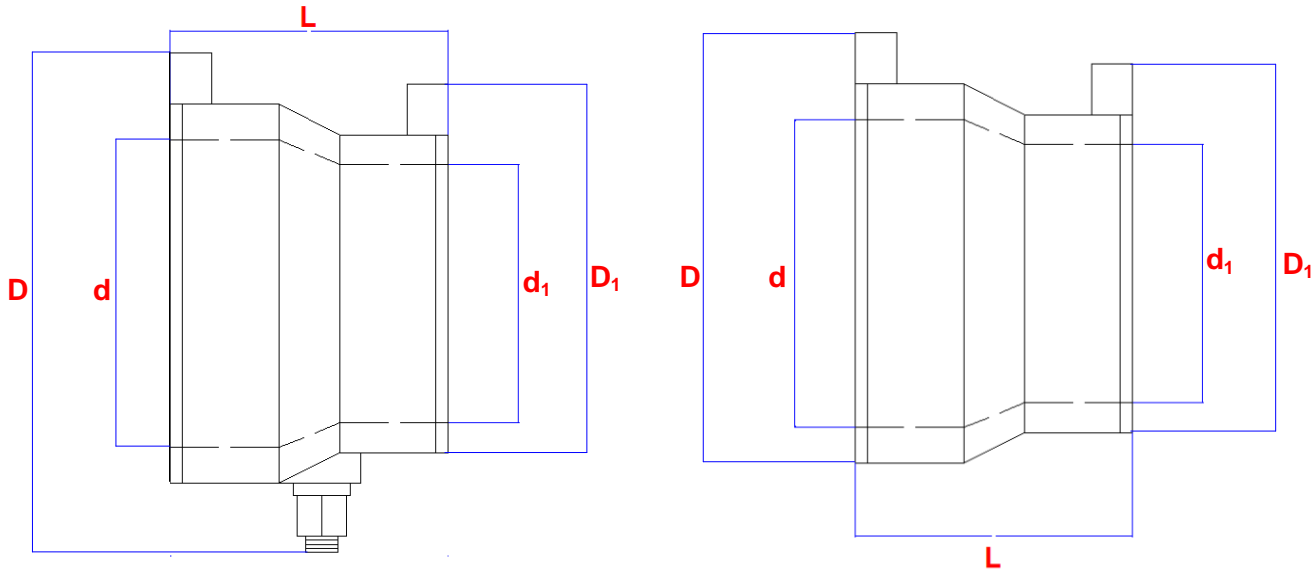
Installation, use, and maintenance of all Electr-O-Fuze™ products shall be in accordance with the manufacturer's recommendations, State and County approvals. In event of conflicts, the stricter requirement shall govern. (AEP installation manual available directly from AEP, or at info@aep-inc.net) All operators to be AEP certified on both the fittings and electro fusion machine

Certifications/Approvals

- UL 971 approved, File # MH47372
- Institute of Petroleum Cert # BC63/1010/98/001 And cert # BC63/0115/2000/001
- Shell Int. Procurement Cert. Cert # BC63/1010/98/002
- State of Florida EQ 683 and EQ 617 – and Derm Approval
- State of Michigan MUSTR – Rule 9, subsections 280.20 (b)
- New York City Fire Dept. CoA 5117
- State of California CARB, State Fire Marshall Cert # GVRC 005:060:001

Secondary Containment
Electrofusion Closure with Test
Port (SCTP)

Secondary Containment
Electrofusion Closure
(SC)



Diam. NB* inches	Diam. OD** metric	Part #	Dim D		Dim D ₁		Dim d		Dim d ₁		Dim L	
			mm	in.	mm	in.	mm	in.			mm	in.
2/1½"	63/50	006-063-050EF(SC)	100	4	85	3.3	63	2	50	1½	65	2.5
2/1½"	63/50	006-063-050EF(SCTP)	115	4.5	85	3.3	63	2	50	1½	65	2.5
2½/2"	75/63	006-075-063EF(SC)	110	4.3	100	4	75	2½	63	2	70	2.7
2½/2"	75/63	006-075-063EF(SCTP)	125	4.9	100	4	75	2½	63	2	70	2.7
4/2½"	110/75	006-110-075EF(SC)	150	6	110	4.3	110	4	75	2½	95	3.7
4/2½"	110/75	006-110-075EF(SCTP)	165	6.5	110	4.3	110	4	75	2½	95	3.7

(*) Nominal Bore

(**) Outside Diameter