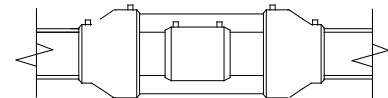


Electr-O-Fuze™ Dip Tube Assembly, UL971 Listed

Product Description

Electr-O-Fuze™ Dip Tube and Splice Fitting assemblies are safe and reliable proven electrofusion fittings with the ability to monitor the primary connection using visual or electronic sensing technology. The Assembly comprises of various electrofusion reducers with an extension over sleeve pipe in order to maintain the secondary pipe over the primary fuel pipe. When used in conjunction with Electr-O-Fuze™ pipe and an Electr-O-Fuze™ EF welding machine, it provides a UL971 compliant fuel installation with a 30 year life span.

Electr-O-Fuze™ Dip Tube Assembly is available for all sizes of coaxial piping where a repair, connection or monitoring point is required. The splice is covered using the over sleeve pipe, which is sealed to the secondary pipe using electrofusion reducers. The dip tube is an added option using an electrofusion saddle and 90° elbows connected to Electr-O-Fuze™ pipe.



Applications

- | | |
|------------------------|-----------------------------------------|
| ○ Service Stations | ○ Refineries |
| ○ Marinas | ○ Harbors |
| ○ Fuel Terminals | ○ Airports |
| ○ Moist & Marshy Areas | ○ Non-Contaminated & Contaminated Sites |

Specifications

- | | |
|------------------------|------------------------------------------------------------------------------------------------------------------------------------------------------------------------------------------------------------------------------------------------------------------------------------------------------------------------------------------------------------------------------------|
| ○ Fitting Type: | Matched electrofusion fittings are utilized throughout the pipeline system in order to join the various pieces. Deep sockets and ‘safe’ low voltage operation (42V), applied through dedicated ancillary equipment ensures maximum joint integrity. Fusion indicators monitor the joint melt pressure, while absolute security of the weld is ensured using the fittings bar code. |
| ○ Temperature Range: | Fittings can be worked with at ambient temperatures between –24°F and 160°F. |
| ○ Pipe Fusion Range: | The fittings can be fused to pipe of SDR stages 17.6 to 7.4 in accordance with DIN 8074 (E), ISO 4437, pr EN 1555 and DIN EN 12201 (E). |
| ○ Operating Pressures: | 50psi secondary with EF test boots & 5psi with rubber test boots. |
| ○ Test Pressure: | Secondary 50psi with EF test boots & 5psi with rubber test boots. |
| ○ Approved Fuel Types: | All Petroleum Products (<i>Motor Vehicle Fuels, High Blend Fuels, Concentrated Fuels, Aviation & Marine Fuels</i>) E85 and Biodiesel. |

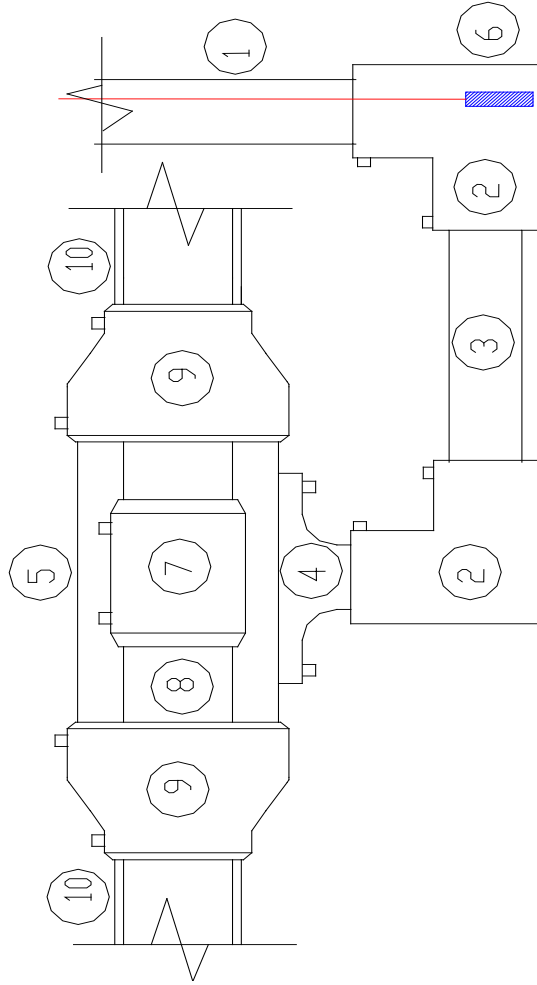
Installation

Installation, use, and maintenance of all Electr-O-Fuze™ products shall be in accordance with the manufacturer’s recommendations, State and County approvals. In event of conflicts, the stricter requirement shall govern. AEP installation manual available directly from AEP, or at info@aep-inc.net. All operators to be AEP certified on both the fittings and electrofusion machine.

Certifications/Approvals

- | | |
|--------------------------------|-----------------------------------------------------------------------|
| ○ UL 971 Approved | File # MH47372 |
| ○ Institute of Petroleum | Cert # BC63/1010/98/001 And cert # BC63/0115/2000/001 |
| ○ Shell Int. Procurement Cert. | Cert # BC63/1010/98/002 |
| ○ State of Florida | EQ 683 and EQ 617 – and Derm Approval |
| ○ State of Michigan | MUSTR – Rule 9, subsections 280.20 (b) |
| ○ New York City Fire Dept. | CoA 5117 |
| ○ DVGW Permit | VP 607, with decisions DV-8601AU2248, DV-8606AU2249 and DV-8611AU2250 |
| ○ Factory Permit | DIN EN 10 204-3.1 |
| ○ State of California | CARB, State Fire Marshall Cert # GVRC 005:060:001 |

1. Electr-O-Fuze™ pipe into inspection box supplied by owner
2. Electrofusion elbow
3. Electr-O-Fuze™ Pipe Single Wall
4. 6"-4" Electrofusion SA Saddle
5. 6" Secondary Pipe
6. Leak detection sensor- pneumericator
7. 3" Electrofusion Coupler
8. 3" Electr-O-Fuze™ Primary Pipe
9. 6"-4" Electrofusion Reducer
10. 4" Electr-O-Fuze™ Secondary Pipe



Drawing of dual contained Dip Tube Assembly		ADVANTAGE EARTH PRODUCTS , INC.	
		Date 01/13	Drawing No. PP001
NAME GB	TITLE A1		
Material HDPE			
Part/Ref Dip Tube			
Projection Scale			