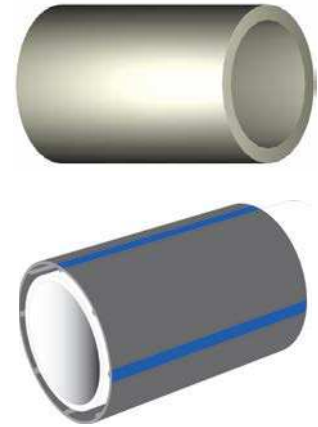


## Electr-O-Fuze™ DEF Pipe

### Product Description

Electr-O-Fuze™ Single and Co-axial DEF Pipe is a proven Semi-Rigid fluorinated HDPE pipe system. It is the only pipe system to fluorinate the interior and exterior of both the primary and secondary pipes, thus providing unparalleled protection. When Used for DEF clients may not have to use fluorinated pipe . When used in conjunction with Electr-O-Fuze™ EF DEF fittings and a Electr-O-Fuze™ EF welding machine, it provides a DEF Compliant installation.

Electr-O-Fuze™ pipe is available in sizes from 1" to 4" nominal bore available in 27ft sticks and 164ft coils. Due to its rugged non corrosive construction and light weight materials it provides a cost competitive extremely quick installation pipe system with a 30 year life span. This system, if supplied dual contained, can be used above or below ground, with a 30 year UV resistance factor.



### Applications

- Marinas
- Service Stations
- Fuel Terminals
- Refineries
- Truck Stops
- Harbors

### Specifications

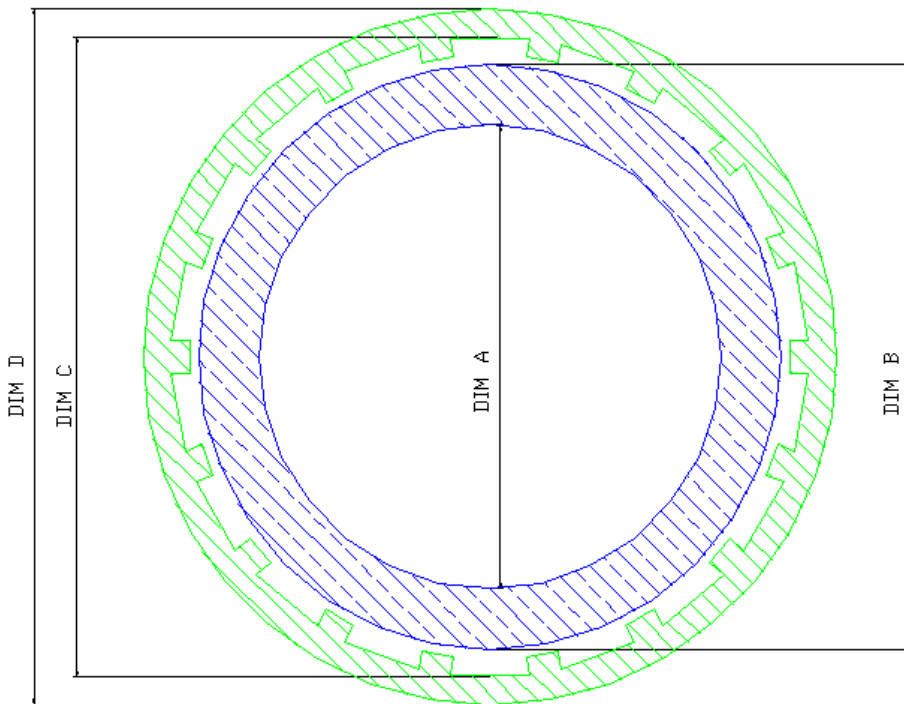
- Pipe Type : Fluorinated or unfluorinated UV stable HDPE co-axial (single or Double wall pipe) with a 30 year design life and product warranty. Primary and secondary pipe come integrated, providing true containment.
- Connections : Electr-O-Fuze™ EF couplers, with spigot elbows, tees, end caps for primary pipe and matching Electr-O-Fuze™ secondary fittings and electro fusion branch saddles
- Transitions : Flange Adaptors, electro fusible Stainless Steel spigot end, both fluorinated
- Interstitial space : Created with internal standoff legs which are attached to primary pipe if required
- Monitoring : Pressure, passive, or liquid fill
- Operating pressures
  - Primary : >60psi; <145
  - Secondary : **50 psi with EF test boots & 5 psi with rubber test boots**
- Test pressure
  - Primary : >60psi; <145
  - Secondary : **50 psi with EF test boots & 5 psi with rubber test boots**
- Approved Fuel Types : DEF, if fluorinated all Petroleum Products (Motor Vehicle Fuels, High Blend Fuels, Concentrated Fuels, Aviation & Marine Fuels) E85 and Biodiesel
- Operating Temperatures -40°F (-40°C) to 140°F (60°C)

### Installation

Installation, use, and maintenance of all Electr-O-Fuze™ products shall be in accordance with the manufacturer's recommendations, State and County approvals. In event of conflicts, the stricter requirement shall govern. (AEP installation manual available directly from AEP, or at info@aep-inc.net.

### Certifications/Approvals/Conforms to:

- UL 971 approved Primary File # M47372
- State of Florida EQ 683 and EQ 617 – and Derm Approval
- State of Michigan MUSTR – Rule 9, subsections 280.20 (b)
- ISO 4427



Pipe ID	Part #	Dim A	Dim B	Dim C	Dim D	Mass Per foot in lbs.
		Primary Actual		Secondary Actual		
1"	9040/32/50MT	1"	1 1/4"	1.4	1.6	0.49
1 1/4"	9050/40/50MT	1 1/4"	1.6"	1.77"	2"	0.66
1 1/2"	9063/50/50MT	1.6"	2"	2.3"	2.7"	0.68
2"	9075/63/50MT	2"	2.5"	2.7"	3"	1.45
3"	90110/90/50MT	2.99"	3.54"	4"	4.33"	2.68
4"	90160/110/50MT	3.66"	4.33"	4.65"	5"	3.43

**BEND RADIUS ALL SIZES 25 TIMES DIM B**

Pipe ID	Primary Actual			Working Pressure_psi
	Max Flow Rate_Gal/min	Fuel Velocity		
1"	25	9.8		145
1 1/4"	49	12.4		145
1 1/2"	77	12.43		145
2"	116	11.18		130
3"	296	10.73		75
4"	367	10.27		75

NAME	GB	TITLE	ADVANTAGE EARTH PRODUCTS, INC.	
Material	HDPE	A1	Date	Drawing No.
Part/Ref	Electr-O-Fuze™2/2.5"		01/13	PP001
Projection	Scale			

## Electr-O-Fuze™ Double Wall Pipe Dimensions and flow rate